

NUMBER: 228 — AUGUST 2023



*A rare photo of descendants of Charles and Charlotte Gogerly at Port Hacking ca 1900-1910 [SSL]*

From left: Elizabeth Barr (daughter of Charles and Charlotte Gogerly), holding baby Kathleen; Rebecca Flower (probably granddaughter of Charles and Charlotte), Charlotte Gogerly (daughter of Charles and Charlotte), Archibald Flower (son of Rebecca), Kate Barr and George Bull (friend)

See article by George Cotis, 'The Gogerlys: troubles, Port Hacking and beyond' (page 16)

**MINDFUL OF THE PAST – FOCUSED ON THE FUTURE**

**EMAIL:** shirehistory@gmail.com; **PHONE:** 0424 600 150 **SSHS WEBSITE:** www.shirehistory.org

**FACEBOOK:** Sutherland Shire Historical Society



## FROM THE EDITOR'S DESK

ELIZABETH CRAIG

If you're looking for variety, then this *Bulletin* has it! From George Cotis's insights into the Gogerly family at Port Hacking (p.16), to Greg Jackson and Bruce Howell's analysis of an 1848 painting of the *Woronora* (p.31) and Ann O'Connor's recollections of her role at the Queen's coronation in 1953 (p.22).

First hand experiences of historic events are always of interest, as they add to our understanding of the event. We would welcome any contributions of personal memories of significant historic occasions.

George Cotis unravels his work towards protecting the Port Hacking environment and what his OAM means to him (p.25); Bruce Watt introduces us to his new book, *Curious Eyes* on reports from early visitors to the NSW colony about their impressions (p.27);

and Garriock Duncan explains the history of *Doryanthes*, a largely online magazine conceived and run by members of SSHS between 2008 and 2018 (p.29).

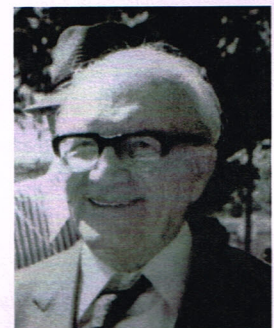
We also have some *Letters to the Editor*, responding to past articles or to requests for readers' views on issues (p.13). If you want to have your say, this is where you can share your ideas (or vent your spleen) without the effort of writing a full article.

For some time we have planned to publish a series of booklets on the histories of suburbs. We need contributors, though! If you would like to submit the story of your suburb, (referencing your sources of information) and supplying photos, we would love to hear from you. Contact the editor for more information at: [shirehistory@gmail.com](mailto:shirehistory@gmail.com).

---

### JULIANA VILLAGE - A new display at the Museum

Juliana Retirement Village in Miranda opened in 1980, initially for aged Dutch migrants. It was the culmination of a dream by Dutch migrant Johan (Jan) Logeman, a house painter who had arrived in Sydney with his family in 1952 to escape war ravaged Holland. While he was in hospital recovering from a heart ailment in 1959, it dawned on him how lonely it could be for elderly Dutch migrants away from their childhood home. The idea of building a Dutch retirement village was born.



This display tells the story of Jan Logeman's efforts to gain support for his idea from fellow Dutch migrants, to research what was needed in a good retirement village, to raise the money needed and to find the right location and the right people to build it. It is a story of determination, patience and hard work, and it reveals the support given by the Dutch community over two decades before the dream became a reality.

You are invited to visit the Sutherland Shire Museum to see the Juliana Village display, as well as all the other exhibits at the Museum telling the history of Sutherland Shire.

Address: 88 Venetia Street, Sylvania (cnr Holt Road)

Opening hours: Tuesdays, 12.00-4.00pm, Thursdays, 9.30am-1.30pm and Saturdays, 9.00am to 1.00pm